

# ONLINE AUCTION



Surplus to the Ongoing Operations

## ROADTREK

Industry Leading Manufacturer  
of Recreational Vehicles

20 Tyler Street, Cambridge (Toronto), Ontario

2017



NEW COST \$200K+

ONLY 17.2HRS

VIDEO AVAILABLE

2013



VIDEO AVAILABLE

VECTOR SYSTEMS LTD. REVOLUTION 180 EDGEBANDER

SOCO MC-350FA-DR FULLY AUTOMATIC COLD SAW

NEW / UNUSED



CHEVALIER FSG-618M SURFACE GRINDER

2011



KING INDUSTRIAL KC-914H ROLL-IN SAW

**CLOSES:**  
**Wednesday**  
**May 15<sup>th</sup>,**  
**11AM ET**

Inspection:  
By Appointment Only

Managed By:



**INFINITY**  
Asset Solutions

- AUCTIONS
- LIQUIDATIONS
- FINANCING
- APPRAISALS

905.669.8893 • [infinityassets.com](http://infinityassets.com)

In Conjunction with



**fen industrial**





2017

NEW COST \$200K+

ONLY 17.2HRS

VIDEO AVAILABLE

VECTOR SYSTEMS LTD. REVOLUTION 180 EDGEBANDER



2016

STHEMMA / DAKE 315 S. CUT COLD SAW

2017 VECTOR SYSTEMS LTD. Revolution 180 Edgebander, ONLY 17.2hrs, Touch Screen Control, Field Size: X-3,550mm, Y-1,830mm, Panel Thickness: 16-36mm, Minimum Radius: 20mm External, 50mm Internal, Edge Thickness: Minimum 0.5mm w/ Accessory Thin Tape Kit, Minimum 1.0mm for Butt Joints, Maximum 3.0mm, Laser Curtains, Safety Mats, Scraper Knife & Trimmer, s/n 170559 w/ Tooling



2017



2 AVAILABLE

STEEL CITY 20-400S1 VERTICAL BANDSAW

MEBER SR600 VERTICAL BANDSAW

STEEL CITY 80-210 S3 DUST COLLECTOR

CHEVALIER FSG-618M Manual Surface Grinder, 6" x 18" Magnetic Chuck, s/n FA3185015 (NEW / UNUSED)

2013 SOCO MC-350FA-DR Fully Automatic Cold Saw, 3HP, 3,500 RPM, s/n 1112MC350D053 w/ Roller Conveyor

2016 STHEMMA / DAKE 315 S. Cut Cold Saw, s/n 0900744

2011 KING INDUSTRIAL KC-914H 14" Self-Feed / Roll-in Vertical Metal Cutting Bandsaw, 1,725 RPM, 110V, s/n 14L0048

2017 STEEL CITY 20-400S1 Vertical Bandsaw, 1,75HP, 15" Throat, 110V, s/n 17200049

MEBER SR600 Vertical Bandsaw, 3HP, 23" Throat, 575V, s/n M350

(2) STEEL CITY 80-210 S3 Dust Collectors, 2HP, 3,450 RPM, Mfg: CT-103, 220V, s/n's 17800030, 17800012



HETTICH DRILL AND INSERTION MACHINE



PYRADIA BELFAB DOWNDRAFT TABLE SYSTEM

2007 PYRADIA BELFAB Portable Downdraft Table System Consisting of (4) PYRADIA BELFAB 3636 DT Downdraft Tables, s/n's 2007-04-21799-1, 2007-04-21799-2, 2007-04-21799-3, 2007-04-21799-4

Visit [infinityassets.com](http://infinityassets.com) for complete specifications. Bid Online at [BidSpotter.com](http://BidSpotter.com)





**CANABLAST ECAB SERIES SUCTION / SANDBLAST CABINET**



**WESCO ELECTRIC STACKER**



**BRIDGEPORT SERIES I VERTICAL MILL**



**FIRST LC-185VSX VERTICAL MILL**



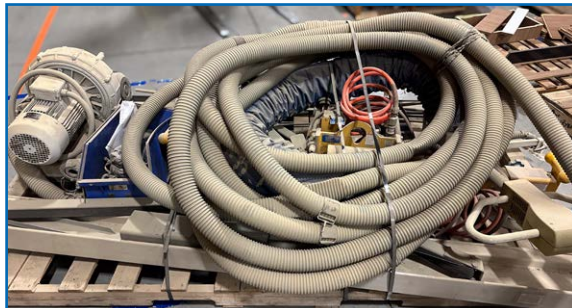
**YALE PROPANE OUTDOOR FORKLIFT**



**KAO MING KMR-700DS RADIAL DRILL**



**HYD-MECH S-20 HORIZONTAL BANDSAW**



**ANVER VACUUM LIFTER SYSTEM**

**CANABLAST ECAB Series Suction / Sandblast Cabinet w/ Dust Collector**

**ANVER VPFL4-30-AIR w/ L58M2-66 Air Powered Light Duty Vacuum Generator w/ Two Pad Lifting Frame, 1,200lb Cap. w/ Rail System, Trolley, Vacuum Pump, etc.**

**2006 WESCO PCBFL-76-25 Electric Stacker, 1,000lb Cap., 25" Forks, Pendant Control, 12V, s/n 169983**

**BRIDGEPORT Series I 2HP Vertical Milling Machine, Heidenhain DRO (#5)**

**FIRST LC-185VSX Vertical Milling Machine, Heidenhain 2-Axis DRO, Speeds to 4,500 RPM, s/n 60302151 (#12)**

**2012 KAO MING KMR-700DS Radial Arm Drill w/ Box Table, s/n R70864 (#14)**

**HYD-MECH S-20 Horizontal Bandsaw, s/n 20993450 (#21)**

**YALE GLP060TFNUAE087 Propane Outdoor Forklift, 6,000lb Cap., 188" Max Lift, 3-Stage Mast, Pneumatic Tires, s/n E177B14816U**

**TERMS OF SALE**   

Payment: All payments must be in Cash, Certified Funds, Wire Transfers, or Company Cheques, which must be accompanied with a bank letter guaranteeing irrevocable payment to Infinity Asset Solutions Inc. Invoices up to \$2,000 can be paid by Visa, Mastercard or Interac.

All bidders must register on Bidspotter by Tuesday May 14th, 5pm.

A 18% buyers premium will be added to all Online purchases.

A \$2,000 refundable security deposit is required upon online registration.

A 25% deposit is required at time of purchase, balance due by Thursday May 16th, 2024, 4pm. NO EXCEPTIONS.

All goods are sold "As Is, Where Is", ALL SALES ARE FINAL. All subject to prior sale. Complete terms and conditions including removal procedures, are available on our website.

**REMOVAL TIMES**

All items by Tuesday May 28th. No Exception.

**NOTE: EXCLUSIVE RIGGING MAY APPLY, SEE [INFINITYASSETS.COM](http://INFINITYASSETS.COM) FOR MORE DETAILS**

*This brochure is meant merely as a guide. Infinity Asset Solutions makes no guarantee, expressed or implied, as to the accuracy of the information in this brochure. Buyers should inspect the goods beforehand to satisfy themselves.*

Managed By:

 **INFINITY** Asset Solutions  
905.669.8893 • [infinityassets.com](http://infinityassets.com)

- AUCTIONS
- LIQUIDATIONS
- FINANCING
- APPRAISALS

In Conjunction with

 **fen industrial**